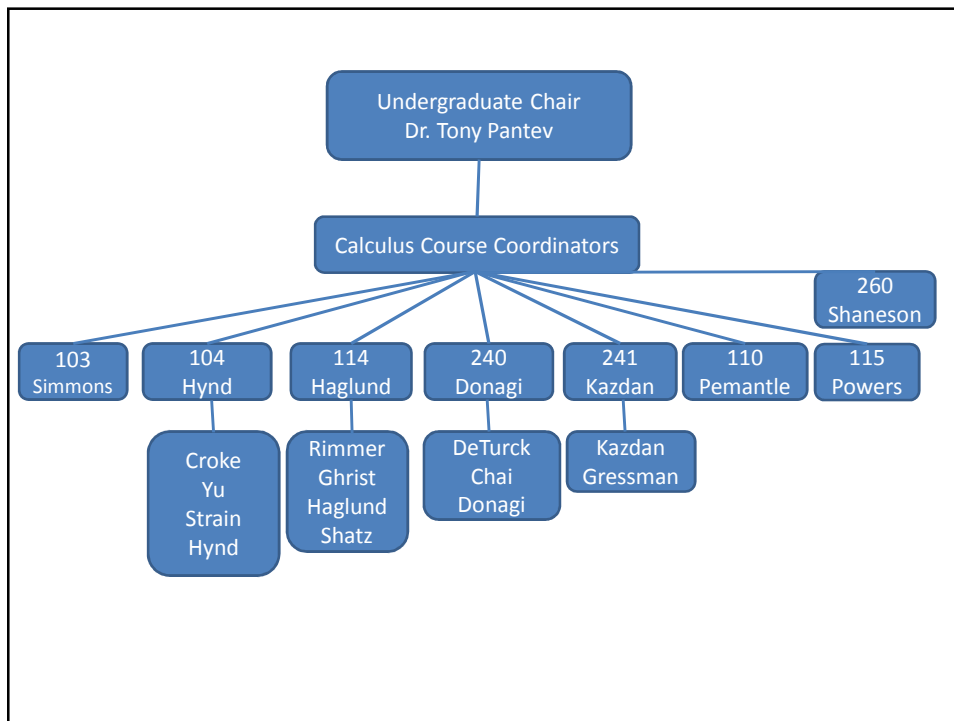
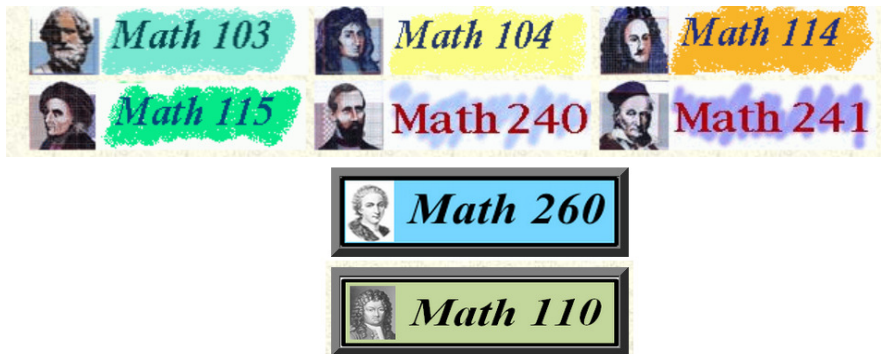


Teaching Calculus

- Undergraduate Math Webpage
<http://www.math.upenn.edu/ugrad/Undergrad.html>
- Calculus Course Webpages
 - Syllabus and core problems
 - Final Exam archive



Calendar

Important Dates

- Wednesday January 14 - First Day of Classes: Follow Monday Schedule
- Monday January 19 - Martin Luther King, Jr Day (No Classes)
- Monday February 2 - Course Selection Period Ends
- Friday February 20 - Drop Period Ends
- Saturday March 7 to Sunday March 15 - No Classes (Spring Term Break)
- Friday March 27 - Last day to withdraw from a course
- Friday April 3 - Good Friday
- Friday April 3 - Saturday April 11 - Passover
- Wednesday April 29 - Last Day of Classes
- Thursday April 30 - Friday May 1 - Reading Days
- **Calculus Common Final Exams: Math 103, 104, 114, 115, 240, 241**
Monday May 11, 12:00-2:00

Penn's 3 year Academic Calendar -

Course Administration

- Diagnostic Placement
- Course Permits
- Accommodations-OSD
<http://www.vpul.upenn.edu/lrc/sds/>
- Academic Integrity
- 103 and 104 : Tutoring Center runs Tune up Workshops
 - Tuesday 1/20 and Wednesday 1/21
 - <http://www.vpul.upenn.edu/tutoring/calculusstartup.php>

Teaching Resources

- Canvas : <http://www.library.upenn.edu/courseware/canvas/canvaslogin.html>
 - Keep record of grades
 - Could be used as course website open only to registered students
 - Can be used to email entire class or select students
 - Can give skill check quizzes online
- Courses in Touch : <http://www.upenn.edu/computing/jisc/apps/CoursesInTouch/>
 - Enter grades
 - Course Problem Notices
 - Course Roster
- My Math Lab : <http://www.pearsonmylabandmastering.com/northamerica/mymathlab/>
 - Online Homework System through our text publisher
 - Can use assignments from other professors
 - Students get immediate feedback
 - Students can get help solving the problems
 - Can access the e-book through My Math Lab

Teaching Resources

- Center for Teaching and Learning : <http://www.upenn.edu/ctl/>
 - Teaching Support : http://www.upenn.edu/ctl/resources/support_for_teaching/
 - Technology
 - Instructional Support
 - Course Evaluations
 - Structured Active Learning : http://www.upenn.edu/ctl/resources/teaching_a_sail_class/
 - Course Management Links : http://www.upenn.edu/ctl/resources/course_management/
 - Course Policies
 - Final Exam Rules
 - Adding and Dropping Rules
 - Incomplete Grade
 - No Exams on religious holidays
 - Passover : Fri. 4/3 – 4/11

Important Web Pages		
Math Undergraduate Web Page	http://www.math.upenn.edu/ugrad/Undergrad.html	
Canvas	http://www.library.upenn.edu/courseware/canvas/	
Courses in Touch	http://www.upenn.edu/isc/apps/CoursesInTouch/	

Important Web Pages		
My Math Lab	http://www.pearsonmylabandmastering.com/northamerica/mymathlab/	
Center for Teaching and Learning	http://www.upenn.edu/ctl/resources	
Math Help	http://www.math.upenn.edu/ugrad/mathhelp.htm	